

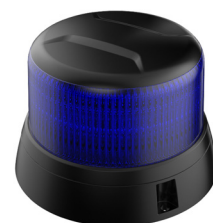
Brillite 3" Micro Beacon

BA81 Series

July 2019

FEATURES

- 12/24VDC
- LED bulb 1watt*16pcs
- PC lens & housing
- Aluminium die-cast cover
- IP67 rated
- Operating temperature
-40°C ~ +65 °C
- Storage temperature
-20°C ~ +65 °C
- Mounting
Screw: 0.5m cable
DIN pole:0.5m calble
Magnet: 2.5m cable+plug
- Weight
Screw mount: 0.47kg
DIN pole mount: 0.48kg
Magnet mount: 0.73kg
- Package 12 pcs/carton
Box: 130*130*170mm
Carton: 410*275*360mm
- Approval
ECE R10
ECE R65 Class 1
CISPR 25 Class 3
SAE J845 Class1



BA8110 

BA8120 

BA8130 



BA8110D 

BA8120D 

BA8130D 

BA8110M25C 

BA8120M25C 

BA8130M25C 

Brillite introduces energy efficient lighting with LED technology in our multi-volt LED beacon warning lamps.

This LED beacon incorporates a long-life LED light source. Using a dedicated LED driver with pulse width modulation constant current supply combines to produce a long lasting, low power consumption and enviromentally friendly LED lamp.

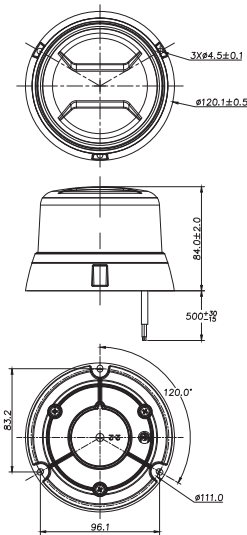


Brillite
Electronics Technology Co., Ltd.

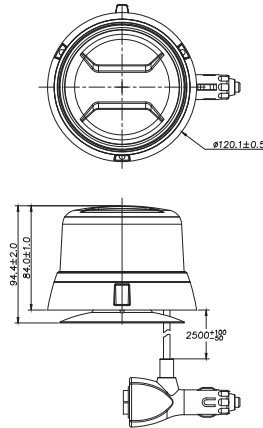
www.brillitelamps.com

Exploded diagram & Drawing

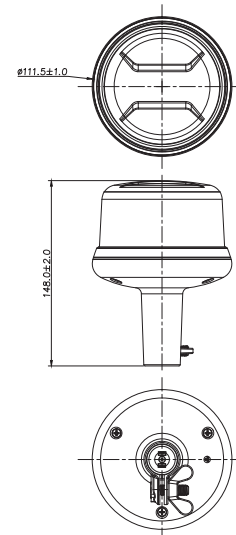
Screw mounting



Magnet mounting



DIN pole mounting



Wiring guide

- Red wire: Positive(+)
- Black wire: Negative(-)
- Yellow wire: Pattern switch (11 patterns available) & Synchronous

Synchronous operation wiring step:

- 1, Connect all the positive wires together, connect the negative wires together, and connect the sync wires together.
- 2, Power on and connect the sync wires to the positive wire for about 3 seconds, then release the sync wire, all the lights enter sync mode.
- 3, After entering the synchronous mode, connect the connected sync wires to the positive pole of the power supply for about 1 second and then release to switch the flashing pattern.
- 4 If the lights are not synchronized after a period of using, please follow step 2 again.

BRILLITE

T: +86-20-8370-2610/2605
F: +86-20-8370-2310
E: info@brillitelamps.com